

TYPE A MALE ADP CAM. x FEMALE

Specification Sheet

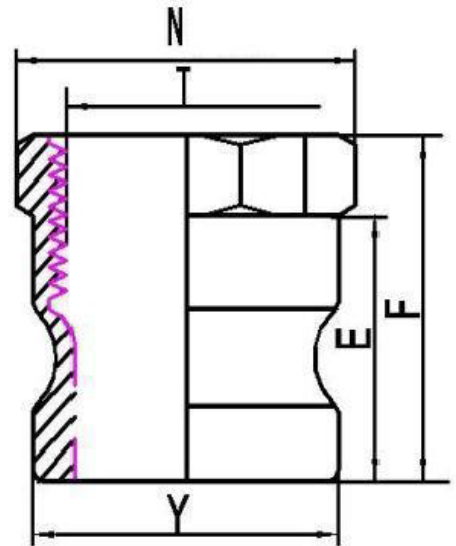
FEATURES & BENEFITS

- Type A Male Adp Cam. X Female Fitting
- Aluminum ADC12
- Ideal for connecting hoses or pipes to efficiently transfer liquids, powders, and particles.
- Straight-through design that maintains consistent pipe size, ensuring smooth and unrestricted material flow.
- Sizes 1/2" – 6"



DIMENSIONS

Part #	Size	N	T	E	F	Y
CAMA03	1/2"	1.01	NPT	1.01	1.49	0.94
CAMA04	3/4"	1.28	NPT	1.08	1.68	1.26
CAMA05	1"	1.49	NPT	1.39	2.02	1.44
CAMA06	1-1/4"	1.90	NPT	1.53	2.14	1.79
CAMA07	1-1/2"	2.19	NPT	1.64	2.26	2.10
CAMA08	2"	2.56	NPT	1.84	2.40	2.48
CAMA09	2-1/2"	3.22	NPT	2.25	2.98	2.98
CAMA10	3"	3.74	NPT	1.93	2.57	3.60
CAMA11	4"	4.84	NPT	2.05	2.82	4.71
CAMA12	5"	/	NPT	2.07	3.02	5.72
CAMA13	6"	/	NPT	2.26	3.16	6.93



TYPE B FEMALE COUPLER x MALE

Specification Sheet

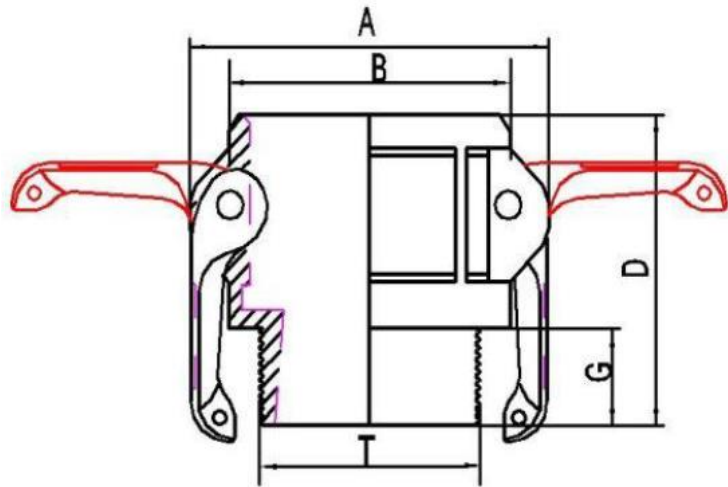
FEATURES & BENEFITS

- Type B Female Coupler X Male Fitting
- Aluminum ADC12
- Ideal for connecting hoses or pipes to efficiently transfer liquids, powders, and particles.
- Straight-through design that maintains consistent pipe size, ensuring smooth and unrestricted material flow.
- Sizes 1/2" – 6"



DIMENSIONS

Part #	Size	A	B	D	T	G
CAMB03	1/2"	1.76	1.30	1.86	NPT	0.63
CAMB04	3/4"	2.44	1.61	2.13	NPT	0.79
CAMB05	1"	2.70	1.80	2.53	NPT	0.94
CAMB06	1-1/4"	3.18	2.24	2.61	NPT	0.80
CAMB07	1-1/2"	3.60	2.57	2.76	NPT	0.92
CAMB08	2"	3.82	2.95	3.00	NPT	0.92
CAMB09	2-1/2"	4.36	3.50	3.39	NPT	1.20
CAMB10	3"	5.18	4.16	3.35	NPT	1.20
CAMB11	4"	6.34	5.33	3.55	NPT	1.28
CAMB12	5"	7.35	6.43	3.85	NPT	1.49
CAMB13	6"	9.32	7.68	4.12	NPT	1.59



TYPE C FEMALE COUPLER x HOSE SHANK

Specification Sheet

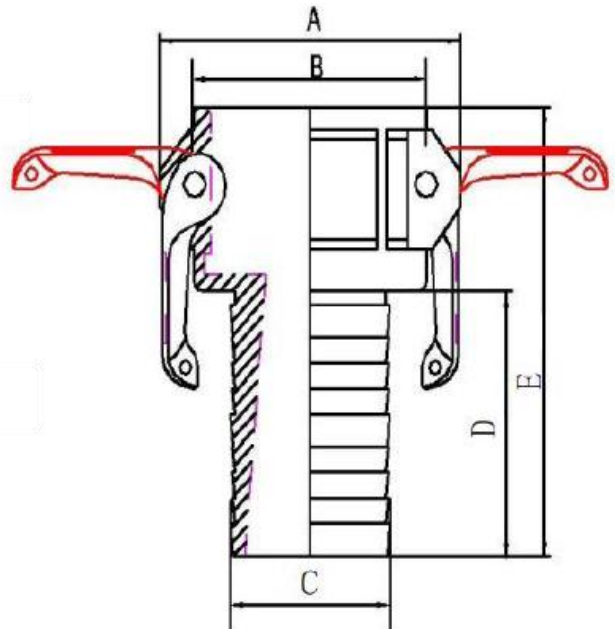
FEATURES & BENEFITS

- Type C Female Coupler x Hose Shank Fitting
- Aluminum ADC12
- Ideal for connecting hoses or pipes to efficiently transfer liquids, powders, and particles.
- Straight-through design that maintains consistent pipe size, ensuring smooth and unrestricted material flow.
- Sizes 1/2" – 6"



DIMENSIONS

Part #	Size	A	B	C	D	E
CAMC03	1/2"	1.75	1.30	0.52-0.54	1.50	2.73
CAMC04	3/4"	2.44	1.61	0.77-0.79	1.83	3.18
CAMC05	1"	2.68	1.85	1.05-1.07	2.23	3.75
CAMC06	1-1/4"	3.15	2.32	1.32-1.35	2.26	4.05
CAMC07	1-1/2"	3.45	2.65	1.56-1.58	2.74	4.55
CAMC08	2"	3.84	3.01	2.01-2.03	3.13	5.17
CAMC09	2-1/2"	4.33	3.62	2.55-2.59	3.76	5.94
CAMC10	3"	5.18	4.14	3.01-3.03	3.71	5.91
CAMC11	4"	6.29	5.44	4.02-4.04	3.97	6.10
CAMC12	5"	7.34	6.47	5.09-5.12	4.36	6.90
CAMC13	6"	9.37	7.62	5.98-6.11	5.92	8.46



(Without Collar)



TYPE D FEMALE COUPLER x FEMALE

Specification Sheet

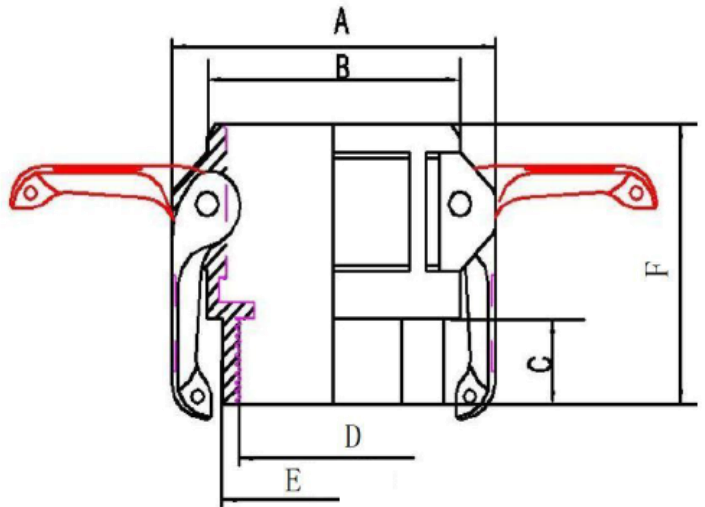
FEATURES & BENEFITS

- Type D Female Coupler x Female Fitting
- Aluminum ADC12
- Ideal for connecting hoses or pipes to efficiently transfer liquids, powders, and particles.
- Straight-through design that maintains consistent pipe size, ensuring smooth and unrestricted material flow.
- Sizes 1/2" – 6"



DIMENSIONS

Part #	Size	A	B	C	D	E	F
CAMD03	1/2"	1.76	1.30	0.59	NPT	1.02	1.83
CAMD04	3/4"	2.44	1.61	0.79	NPT	1.26	2.13
CAMD05	1"	2.70	1.80	0.81	NPT	1.49	2.41
CAMD06	1-1/4"	3.18	2.24	0.90	NPT	1.89	2.73
CAMD07	1-1/2"	3.61	2.58	0.86	NPT	2.27	2.72
CAMD08	2"	3.83	3.02	0.77	NPT	2.56	2.76
CAMD09	2-1/2"	4.33	3.54	1.15	NPT	3.18	3.28
CAMD10	3"	5.18	4.16	1.00	NPT	3.74	3.19
CAMD11	4"	6.29	5.45	1.12	NPT	4.69	3.29
CAMD12	5"	7.34	6.44	1.42	NPT	5.93	3.82
CAMD13	6"	9.45	7.86	1.46	NPT	7.13	3.93



TYPE E MALE COUPLER x HOSE SHANK

Specification Sheet

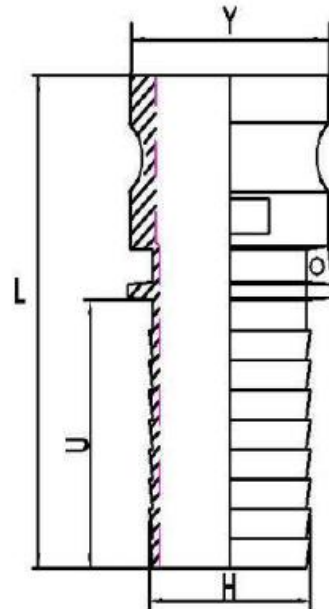
FEATURES & BENEFITS

- Type E Male Coupler x Hose Shank Fitting
- Aluminum ADC12
- Ideal for connecting hoses or pipes to efficiently transfer liquids, powders, and particles.
- Straight-through design that maintains consistent pipe size, ensuring smooth and unrestricted material flow.
- Sizes 1/2" – 6"



DIMENSIONS

Part #	Size	L	U	Y
CAME03	1/2"	3.11	1.44	0.96
CAME04	3/4"	3.57	2.02	1.26
CAME05	1"	4.05	2.24	1.06
CAME06	1-1/4"	4.34	2.09	1.79
CAME07	1-1/2"	4.85	2.72	2.10
CAME08	2"	5.12	2.88	2.48
CAME09	2-1/2"	6.26	3.73	2.98
CAME10	3"	6.31	3.90	3.60
CAME11	4"	6.46	3.76	4.71
CAME12	5"	7.34	4.45	5.71
CAME13	6"	8.80	5.92	6.92



TYPE F MALE ADP CAM. x MALE

Specification Sheet

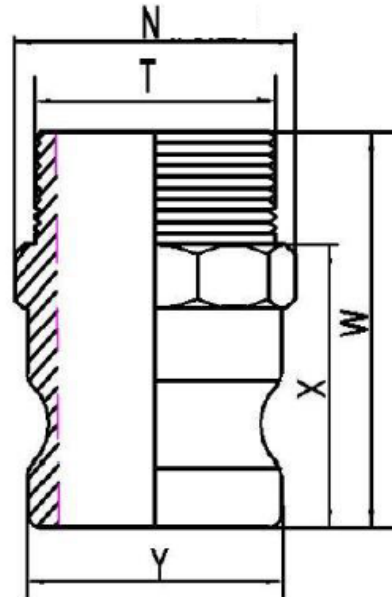
FEATURES & BENEFITS

- Type F Male Adp Cam. X Male Fitting
- Aluminum ADC12
- Ideal for connecting hoses or pipes to efficiently transfer liquids, powders, and particles.
- Straight-through design that maintains consistent pipe size, ensuring smooth and unrestricted material flow.
- Sizes 1/2" – 6"



DIMENSIONS

Part #	Size	N	T	X	W	Y
CAMF03	1/2"	1.01	NPT	1.53	2.20	0.95
CAMF04	3/4"	1.28	NPT	1.66	2.40	1.26
CAMF05	1"	1.49	NPT	2.01	2.79	1.44
CAMF06	1-1/4"	1.85	NPT	2.12	2.99	1.79
CAMF07	1-1/2"	2.24	NPT	2.02	2.89	2.10
CAMF08	2"	2.54	NPT	2.34	3.25	2.48
CAMF09	2-1/2"	3.18	NPT	2.59	3.76	2.98
CAMF10	3"	3.74	NPT	2.45	3.07	3.60
CAMF11	4"	4.83	NPT	2.72	3.91	4.70
CAMF12	5"	/	NPT	3.07	4.52	5.72
CAMF13	6"	/	NPT	3.15	4.69	6.92



TYPE DC DUST CAP

Specification Sheet

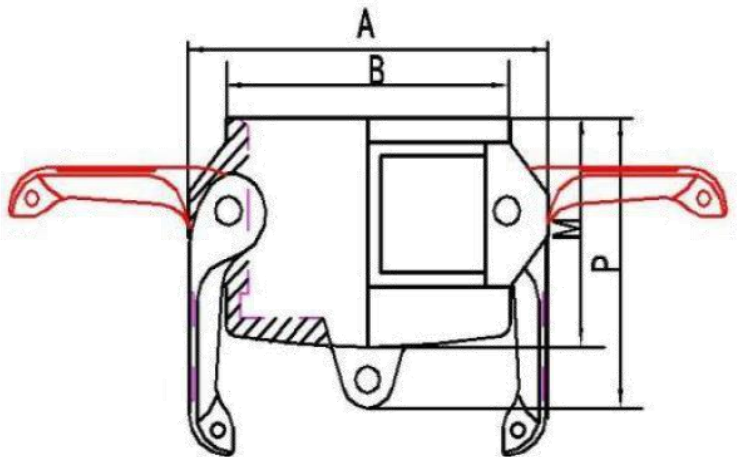
FEATURES & BENEFITS

- Type DC Dust Cap Fitting
- Aluminum ADC12
- Ideal for connecting hoses or pipes to efficiently transfer liquids, powders, and particles.
- Straight-through design that maintains consistent pipe size, ensuring smooth and unrestricted material flow.
- Sizes 1/2" – 6"



DIMENSIONS

Part #	Size	A	B	M	P
CAMDC03	1/2"	1.75	1.30	1.24	1.47
CAMDC04	3/4"	2.37	1.57	1.41	1.72
CAMDC05	1"	2.67	1.81	1.70	2.05
CAMDC06	1-1/4"	3.18	2.24	1.85	2.29
CAMDC07	1-1/2"	3.49	2.60	1.88	2.31
CAMDC08	2"	3.84	3.00	2.09	2.48
CAMDC09	2-1/2"	4.35	3.46	2.18	2.58
CAMDC10	3"	5.18	4.12	2.40	2.88
CAMDC11	4"	6.29	5.36	2.41	2.92
CAMDC12	5"	7.35	6.45	2.63	3.09
CAMDC13	6"	9.32	7.69	2.73	3.48



TYPE DP DUST PLUG

Specification Sheet

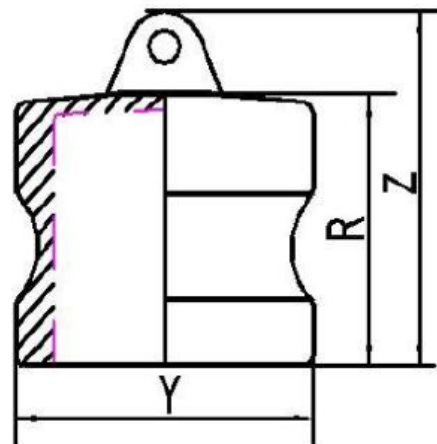
FEATURES & BENEFITS

- Type DP Dust Plug Fitting
- Aluminum ADC12
- Ideal for connecting hoses or pipes to efficiently transfer liquids, powders, and particles.
- Straight-through design that maintains consistent pipe size, ensuring smooth and unrestricted material flow.
- Sizes 1/2" – 6"



DIMENSIONS

Part #	Size	R	Z	Y
CAMDP03	1/2"	1.27	1.55	0.95
CAMDP04	3/4"	1.19	1.55	1.26
CAMDP05	1"	1.45	1.86	1.45
CAMDP06	1-1/4"	1.66	2.00	1.79
CAMDP07	1-1/2"	1.64	2.01	2.10
CAMDP08	2"	1.88	2.32	2.48
CAMDP09	2-1/2"	1.93	2.36	2.98
CAMDP10	3"	2.08	2.51	3.60
CAMDP11	4"	2.22	2.71	4.70
CAMDP12	5"	2.28	2.90	5.71
CAMDP13	6"	2.39	2.89	6.92



CAM FITTING REPLACEMENT GASKET

Specification Sheet

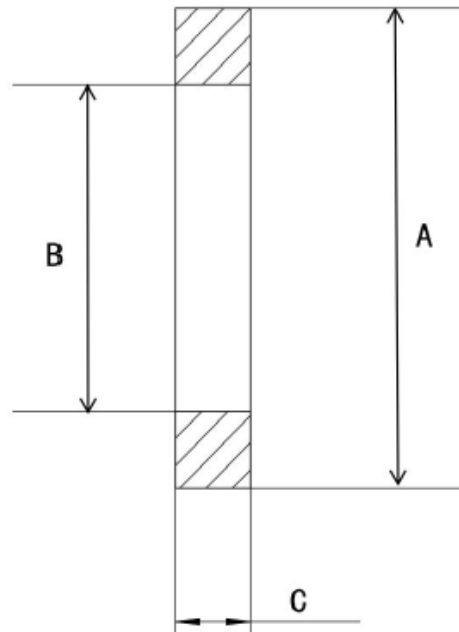
FEATURES & BENEFITS

- Cam Fitting Replacement Gasket
- Rubber (NBR)
- Sizes 1/2" – 6"



DIMENSIONS

Part #	Size	A (Outside Diameter)	B (Inside Diameter)	C (Height)
CAMG03	1/2"	1.02	0.67	0.16
CAMG04	3/4"	1.36	0.87	0.22
CAMG05	1"	1.56	1.06	0.25
CAMG06	1-1/4"	1.95	1.36	0.25
CAMG07	1-1/2"	2.19	1.63	0.25
CAMG08	2"	2.64	2.01	0.25
CAMG09	2-1/2"	3.13	2.48	0.25
CAMG10	3"	3.72	3.01	0.25
CAMG11	4"	4.87	4.00	0.25
CAMG12	5"	5.95	4.98	0.25
CAMG13	6"	7.07	6.02	0.25



AIR HOSE FITTINGS “CROWS FEET” HOSE END

Specification Sheet

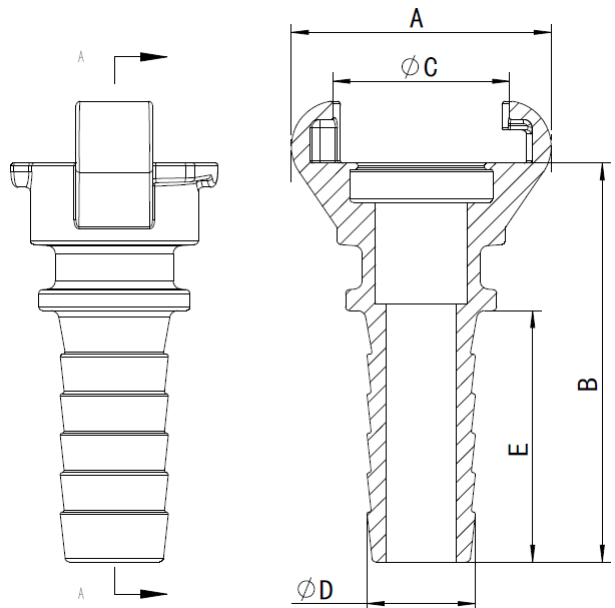
FEATURES & BENEFITS

- Hose End Air Hose Fitting - Crows Feet
- Aluminum ADC12
- Ideal for connecting hoses or pipes to efficiently transfer liquids, powders, and particles.
- Straight-through design that maintains consistent pipe size, ensuring smooth and unrestricted material flow.
- Sizes 3/8" – 1"



DIMENSIONS

Part #	Size	A	B	C	D	E (Hex)
AHFHE02	3/8"	2.44	2.78	1.72	0.46	1.49
AHFHE03	1/2"	2.44	2.86	1.64	0.49	1.61
AHFHE04	3/4"	2.46	3.37	1.64	0.82	2.02
AHFHE05	1"	2.47	1.68	1.06	2.22	



AIR HOSE FITTINGS “CROWS FEET” MALE END

Specification Sheet

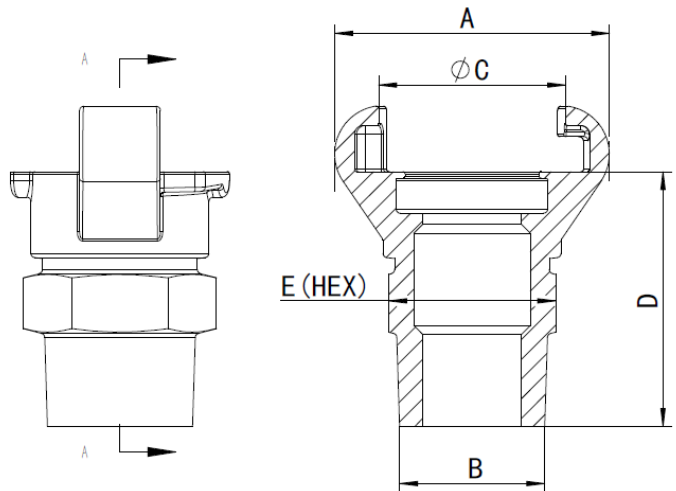
FEATURES & BENEFITS

- Male End Air Hose Fitting - Crows Feet
- Aluminum ADC12
- Ideal for connecting hoses or pipes to efficiently transfer liquids, powders, and particles.
- Straight-through design that maintains consistent pipe size, ensuring smooth and unrestricted material flow.
- Sizes 3/8" – 1"



DIMENSIONS

Part #	Size	A	B (NPT)	C	D	E (Hex)
AHFME02	3/8"	2.45	3/8"	1.71	1.97	1.08
AHFME03	1/2"	2.46	1/2"	1.64	2.23	0.90
AHFME04	3/4"	2.45	3/4"	1.66	2.31	1.28
AHFME05	1"	2.46	1"	1.67	2.27	1.40



AIR HOSE FITTINGS “CROWS FEET” FEMALE END

Specification Sheet

FEATURES & BENEFITS

- Female End Air Hose Fitting - Crows Feet
- Aluminum ADC12
- Ideal for connecting hoses or pipes to efficiently transfer liquids, powders, and particles.
- Straight-through design that maintains consistent pipe size, ensuring smooth and unrestricted material flow.
- Sizes 3/8" – 1"



DIMENSIONS

Part #	Size	A	B	C	D (NPT)	E
AHFFE02	3/8"	2.40	1.93	1.17	3/8"	1.12
AHFFE03	1/2"	2.45	1.66	1.65	1/2"	1.11
AHFFE04	3/4"	2.45	1.65	1.68	3/4"	1.39
AHFFE05	1"	2.45	1.60	1.67	1"	1.58

