

# WMV-2PK Washing Machine Valves

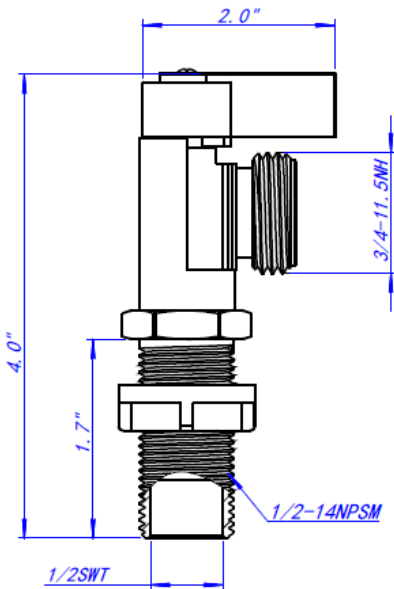
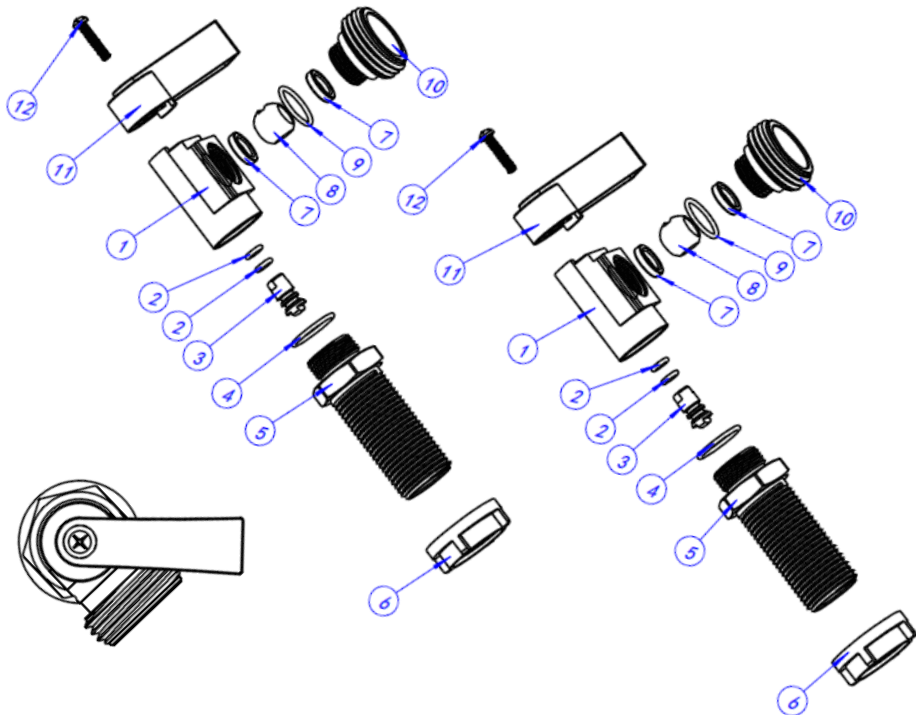
## Specification Sheet

### FEATURES & BENEFITS

- Maintenance Free 1/4 Turn Shut Off Valve
- Top Handle – Pack of Two (One Hot & One Cold)
- Approvals: UPC, ASME A112.18.1/CSA B125.1, NSF 61, NSF 372
- 3/4" Threaded

### MATERIAL SPECIFICATIONS

No.	Part	Material	Qty.																							
1	Body	Brass LF	2																							
2	O-Ring	EPDM	4																							
3	Stem	Brass	2																							
4	O-Ring	NBR	2																							
5	Connector	Brass LF	2																							
6	Nut	PS	7	Seat	PTFE	4	8	Ball	Brass LF	2	9	O-Ring	NBR	2	10	Connector	Brass LF	2	11	Handle	AL	2	12	Screw	Steel	2
7	Seat	PTFE	4																							
8	Ball	Brass LF	2																							
9	O-Ring	NBR	2																							
10	Connector	Brass LF	2																							
11	Handle	AL	2																							
12	Screw	Steel	2																							



**MATCO**  
**NORCA**

# WMVPX-2PK Washing Machine Valves

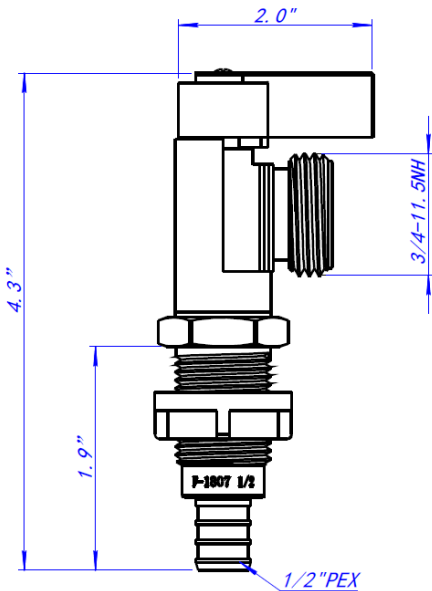
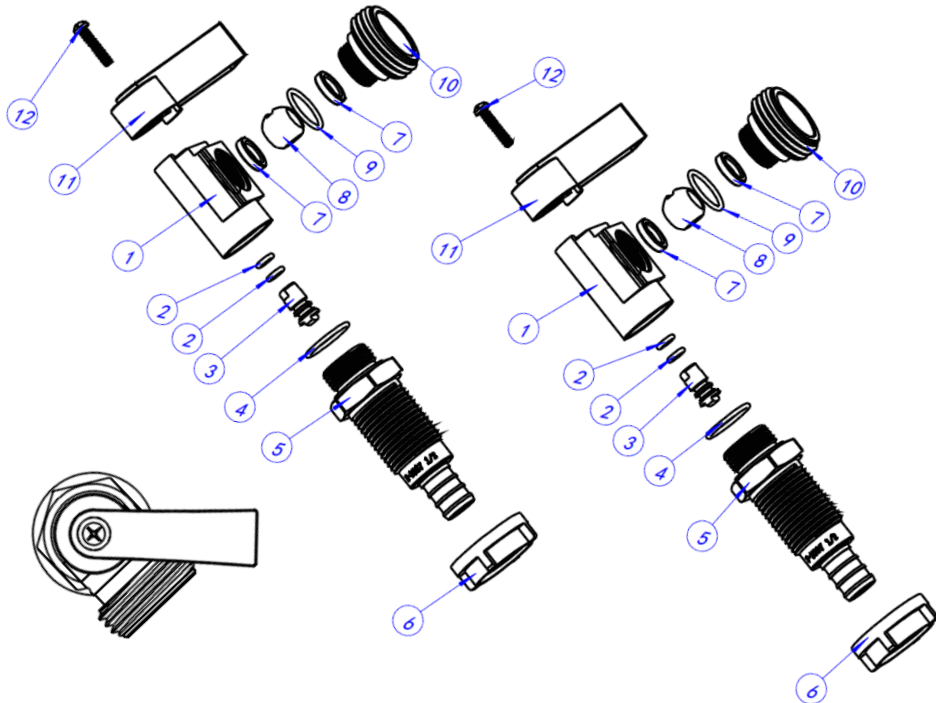
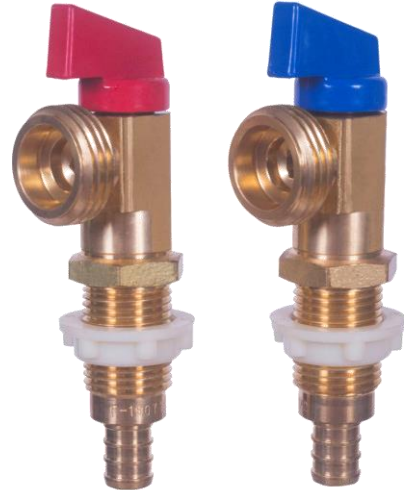
## Specification Sheet

### FEATURES & BENEFITS

- Maintenance Free 1/4 Turn Shut Off Valve
- Top Handle – Pack of Two (One Hot & One Cold)
- Approvals: UPC, ASME A112.18.1/CSA B125.1, NSF 61, NSF 372
- 3/4" PEX

### MATERIAL SPECIFICATIONS

No.	Part	Material	Qty.
1	Body	Brass LF	2
2	O-Ring	EPDM	4
3	Stem	Brass	2
4	O-Ring	NBR	2
5	Connector	Brass LF	2
6	Nut	PS	2
7	Seat	PTFE	4
8	Ball	Brass LF	2
9	O-Ring	NBR	2
10	Connector	Brass LF	2
11	Handle	AL	2
12	Screw	Steel	2



**MATCO**  
**NORCA**

# WMVPXCE-2PK Washing Machine Valves

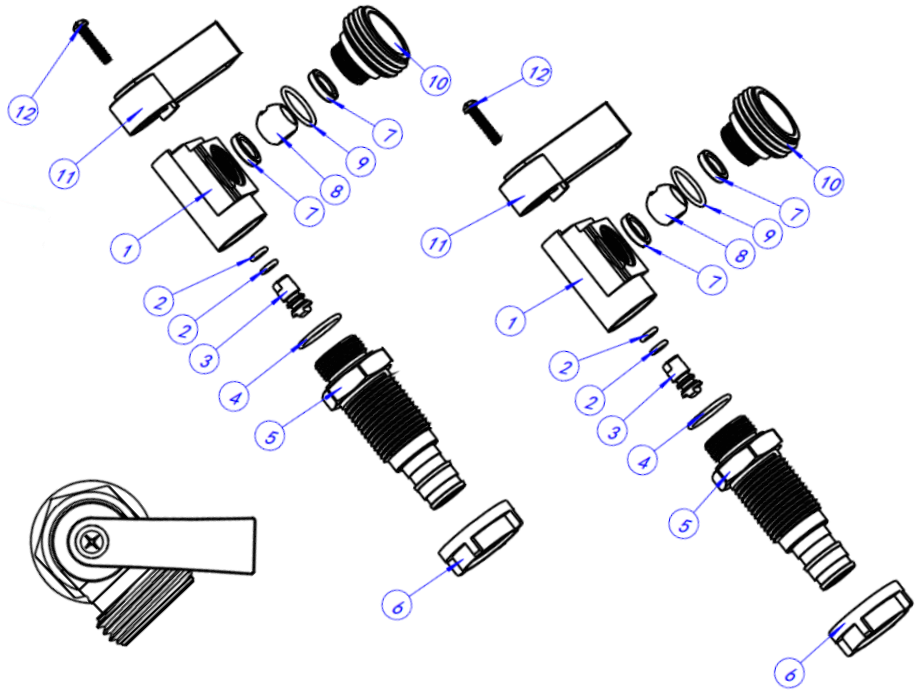
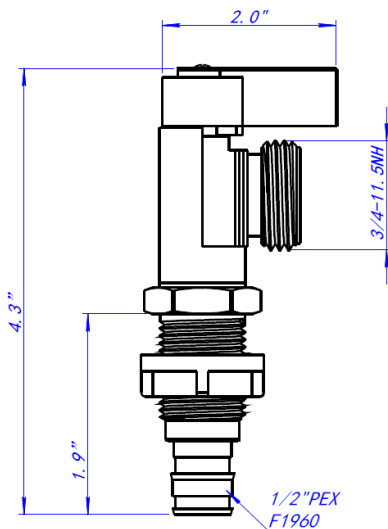
## Specification Sheet

### FEATURES & BENEFITS

- Maintenance Free 1/4 Turn Shut Off Valve
- Top Handle – Pack of Two (One Hot & One Cold)
- Approvals: UPC, ASME A112.18.1/CSA B125.1, NSF 61, NSF 372
- 3/4" Cold Expansion PEX

### MATERIAL SPECIFICATIONS

No.	Part	Material	Qty.
1	Body	Brass LF	2
2	O-Ring	EPDM	4
3	Stem	Brass	2
4	O-Ring	NBR	2
5	Connector	Brass LF	2
6	Nut	PS	2
7	Seat	PTFE	4
8	Ball	Brass LF	2
9	O-Ring	NBR	2
10	Connector	Brass LF	2
11	Handle	AL	2
12	Screw	Steel	2



**MATCO**  
**NORCA**

# WMVP-2PK Washing Machine Valves

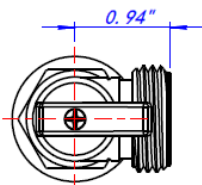
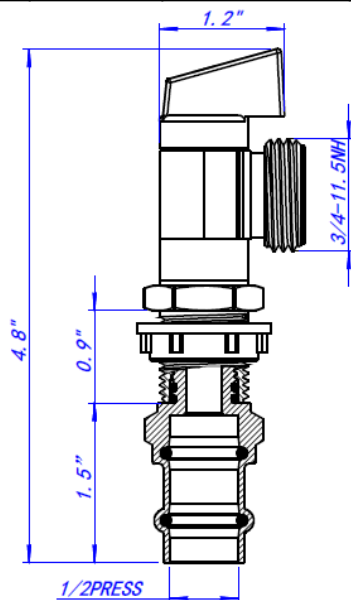
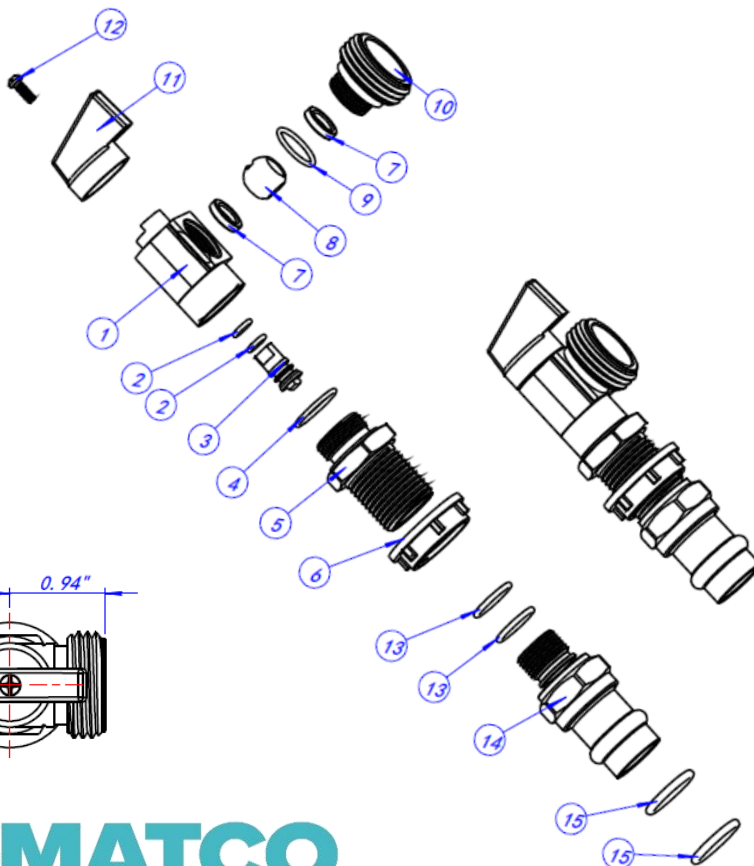
## Specification Sheet

### FEATURES & BENEFITS

- Maintenance Free 1/4 Turn Shut Off Valve
- Top Handle – Pack of Two (One Hot & One Cold)
- Approvals: UPC, ASME A112.18.1/CSA B125.1, NSF 61, NSF 372
- 3/4" Press

### MATERIAL SPECIFICATIONS

No.	Part	Material	Qty.
1	Body	Brass C46500	2
2	O-Ring	EPDM	4
3	Stem	Brass HPB59-1	2
4	O-Ring	EPDM	2
5	Connector	Brass C46500	2
6	Nut	Plastics	2
7	Seat	PTFE	4
8	Ball	Brass C46500	2
9	O-Ring	EPDM	2
10	Connector	Brass C46500	2
11	Handle	Zinc Alloy	2
12	Screw	Steel	2
13	O-Ring	EPDM	4
14	Connector	Brass C46500	2
15	O-Ring	EPDM	4



**MATCO  
NORCA**